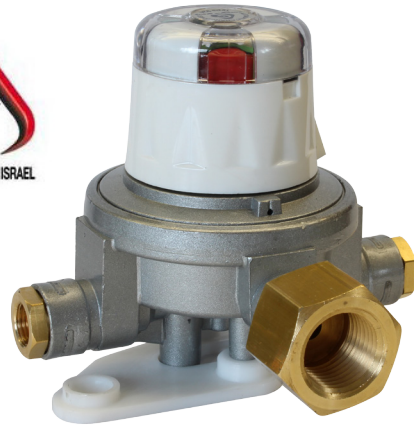


Automatic Changeover with SII Marking



- High capacity unit compared to the competitors' products: 10kg/h
- Automatic switch to the auxiliary cylinder when the primary service cylinder is empty
- Ideal for use with gas kitchens, hobs, ovens and other applications
- Allows the use of LPG without gas flow interruptions, no more need to disconnect and reconnect the regulator
- Allows the empty gas cylinder to be disconnected without stopping the gas flow

MADE IN ITALY



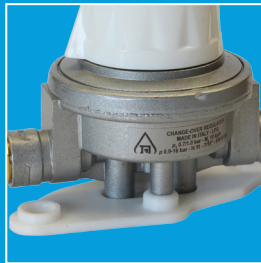
Gas	LPG
Inlet Pressure	0,9 - 16 bar
Outlet Pressure	0.7 - 1 bar
Maximum Rated Capacity	10 Kg/h
Inlet Connections	¼" Inverted Flare
Outlet Connection	½" NPT Female
Approved by SII (The Standards Institution of Israel)	
According to EN 16129	



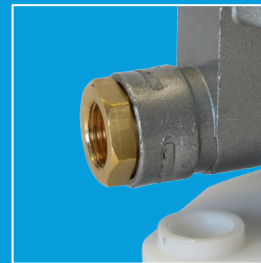
Changeover Handwheel:
Automatic switch to the second cylinder (auxiliary cylinder) when the primary cylinder is empty



Clear Indicator System:
big and user friendly display



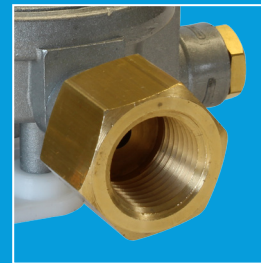
Easy to fix on the wall



Customizable inlet and outlet connections
upon request



Materials approved by EN13786 Standard,
Robust Zamak body design



Incorporated Non Return Device:
stops the gas in the outlet while changing the cylinder